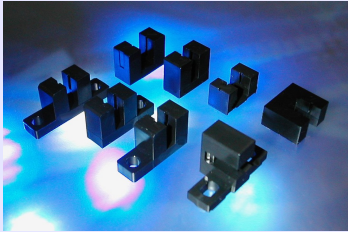


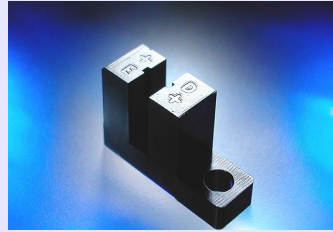
# TRANSMISSIVE OPTICAL SENSORS

CTC AS

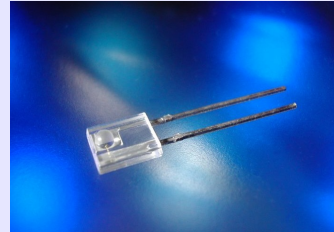
**8 standard packages in PCB and chassis mount (provisional information)**



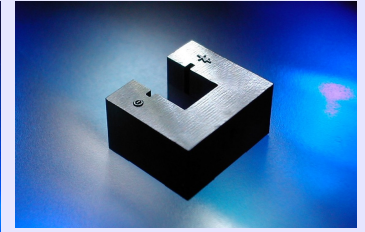
**STANDARD RANGE**



**EXAMPLE**



**DEVICE OPTIONS**



**CUSTOM AND SPECIAL**

Transmissive optical sensors available in 4 PCB versions and 4 chassis mount versions, they can be fitted with different emitters and sensors, standard is IRLED and Phototransistor, however photodarlington and photodiode sensors are also possible.

type	package	Type index	Chromatechnic part no	link
1	TWO TAB		CTC AS 1 A 001	<a href="#">PDF</a>
2	ONE TAB RIGHT		CTC AS 1 B 001	<a href="#">PDF</a>
3	ONE TAB LEFT		CTC AS 1 C 001	<a href="#">PDF</a>
4	TWO TAB RIGHTANGLE		CTC AS 1 D 001	<a href="#">PDF</a>
5	WIDE GAP NO TAB		CTC AS 1 E 001	<a href="#">PDF</a>
6	STD GAP NO TAB		CTC AS 1 F 001	<a href="#">PDF</a>
7	LOW PROFILE NO TAB		CTC AS 1 G 001	<a href="#">PDF</a>
8	STD GAP RIGHT ANGLE		CTC AS 1 H 001	<a href="#">PDF</a>

<b>RoHS Status</b>	<input checked="" type="checkbox"/> <b>These products are RoHS Compliant</b>
--------------------	--

## Drawings, specifications, datasheets

Data sheets for each product are available, click on the link, or call us for a copy.

## Application information

All applications / descriptions / dimensions and parameters in this information pack are for guidance only, please refer to the latest issue of the datasheet for all design parameters, E&OE. It is the customers responsibility to ensure the device meets the application, RoHS and any other legal requirements for use.

Transmissive optical switches - application information

Transmissive optical switches are a versatile component that can be used in several ways, besides the obvious simple beam break detection.

Simple beam break

Object movement / rotation

Object direction / rotation

Object transparency / opacity

Object colour

Object surface reflection

Detection of transparent materials